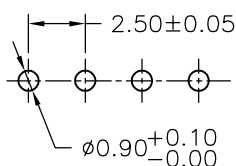
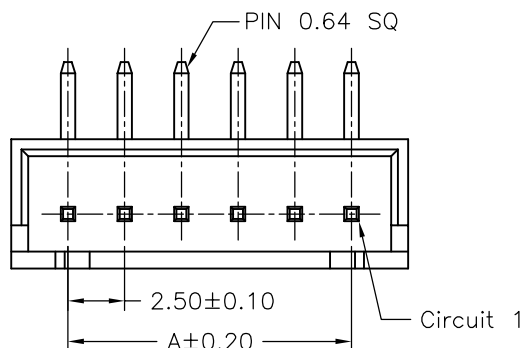
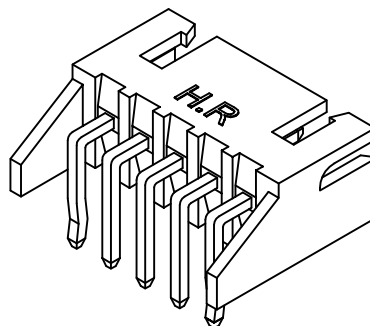
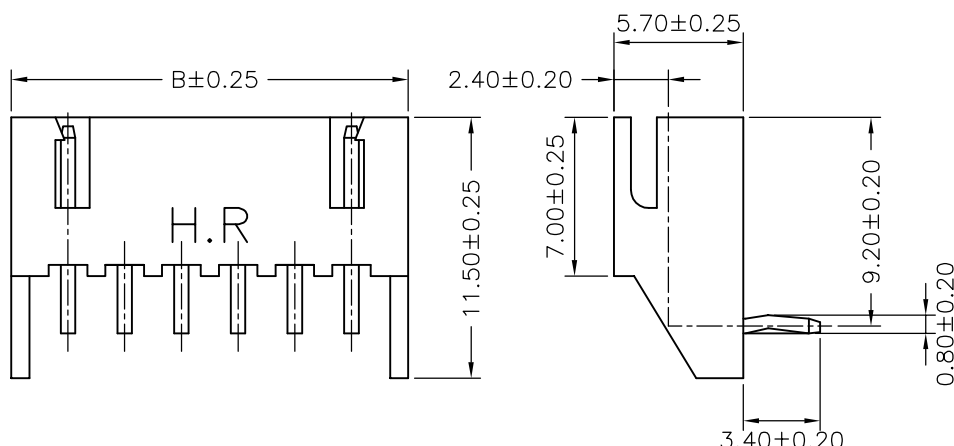


02P



P.C.B. LAYOUT



TYPE 1

Ordering Information:

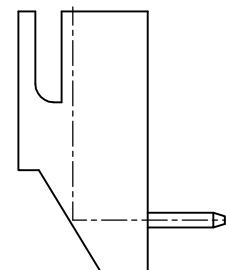
A2501WR-XP *
1 2

1.Part No.

2.Style:

1-Type 1

2-Type 2



TYPE 2

SPECIFICATIONS

Current Rating: 3A AC,DC

Voltage Rating: 250V AC,DC

Temperature Range: -25°C ~ +85°C

Contact Resistance: 10mΩ Max

Insulation Resistance: 1000MΩ Min

Withstanding Voltage: 1000V AC/minute



Pin Material: Brass/Tin-plated

Material: Nylon 66,UL94V-0

Color: Natural(White)

Ordering Information & Dimensions

PART NO.	Dimensions	
	A	B
A2501WR-02P	2.50	7.50
A2501WR-03P	5.00	10.00
A2501WR-04P	7.50	12.50
A2501WR-05P	10.00	15.00
A2501WR-06P	12.50	17.50
A2501WR-07P	15.00	20.00
A2501WR-08P	17.50	22.50
A2501WR-09P	20.00	25.00
A2501WR-10P	22.50	27.50
A2501WR-11P	25.00	30.00
A2501WR-12P	27.50	32.50
A2501WR-13P	30.00	35.00
A2501WR-14P	32.50	37.50
A2501WR-15P	35.00	40.00
A2501WR-16P	37.50	42.50
A2501WR-17P	40.00	45.00
A2501WR-18P	42.50	47.50
A2501WR-19P	45.00	50.00
A2501WR-20P	47.50	52.50

				JOINT TECH ELECTRONIC IND. CO., LTD.		
				JOY DAY INDUSTRIAL CO., LTD.		
				UNIT	SCALE	SHEET
				mm		1 of 1
			DRAWN BY	APPROVED BY		
			李勤	董正一		
			2006.05.17	2006.05.17		
			GENERAL TOLERANCE			
A1	REVISE	2007.03.07	X. X±0.25	ANGLE±		
A0	NEW RELEASE	2006.05.17	X. XX±0.15			
REV.	DESCRIPTION	DATE	X. XXX±0.05			
			DRAW NO. : A2501WR-XPX			
			REV. A1			